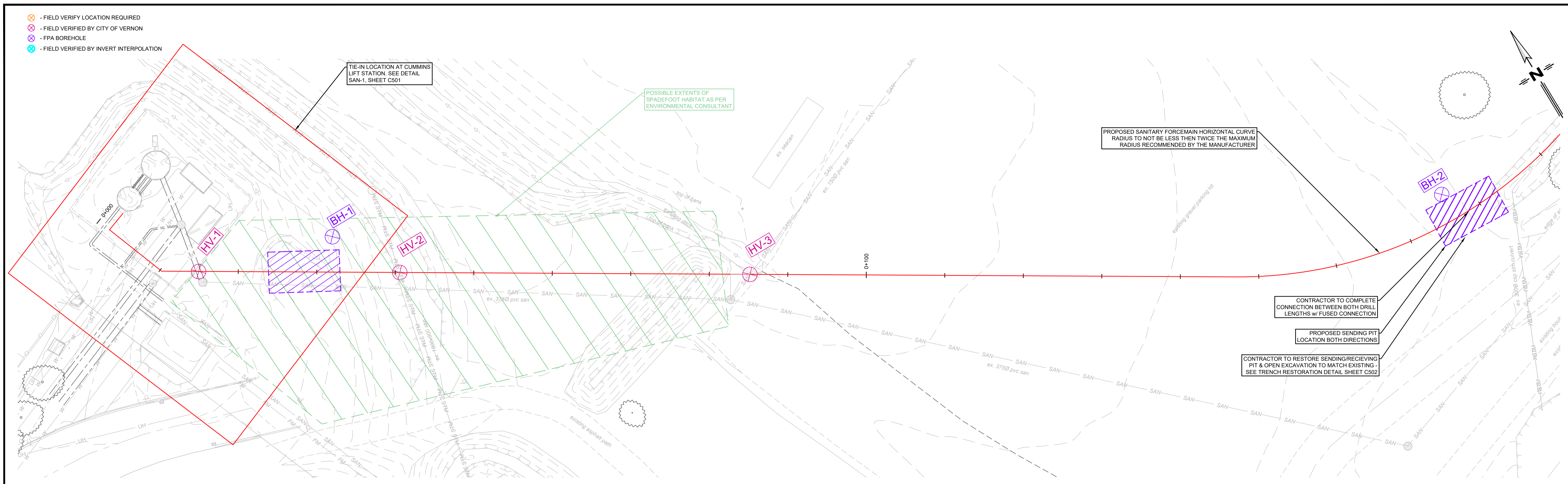


Z:\Projects\173\29 - Cummins Foremain Replacement\1 - Civil Engineering\Drawings\1 - Design\173-29 - Cummins Foremain - Design - CoV Option.dwg



REV. No.	DATE	DESIGNED	DRAWN	CHECKED	DESCRIPTION
A	2024/08/20	BTL	LJW	BTL	PROPOSED FORCEMAIN ALIGNMENT
B	2024/08/29	BTL	LJW	BTL	PROPOSED FORCEMAIN ALIGNMENT & LOCATE PLAN
C	2024/09/24	BTL	JKW	BTL	ISSUED FOR 60% DESIGN
D	2024/10/23	BTL	LJW	BTL	ISSUED FOR TENDER

PERMIT NO: 200879
DRAFT
 (ISSUED FOR REVIEW)



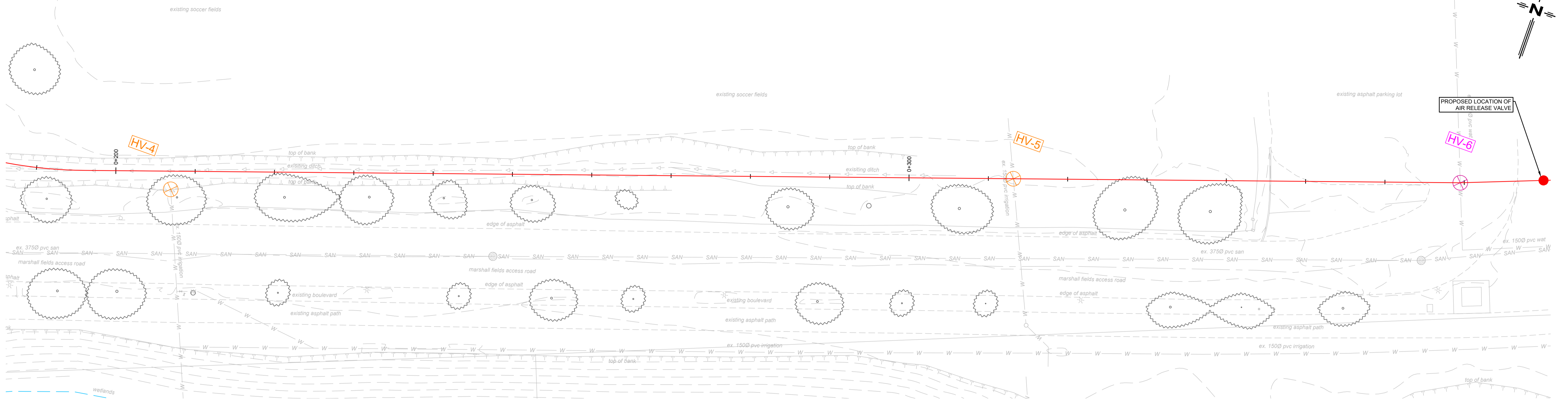
SCALE
 H:1:250
 V:N/A
 SHEET
 3 OF 9

TITLE
CUMMINS FORCEMAIN REPLACEMENT
 PROPOSED FORCEMAIN PLAN /PROFILE
 STA: 0+000 - 0+190
 DRAWING NUMBER
C201

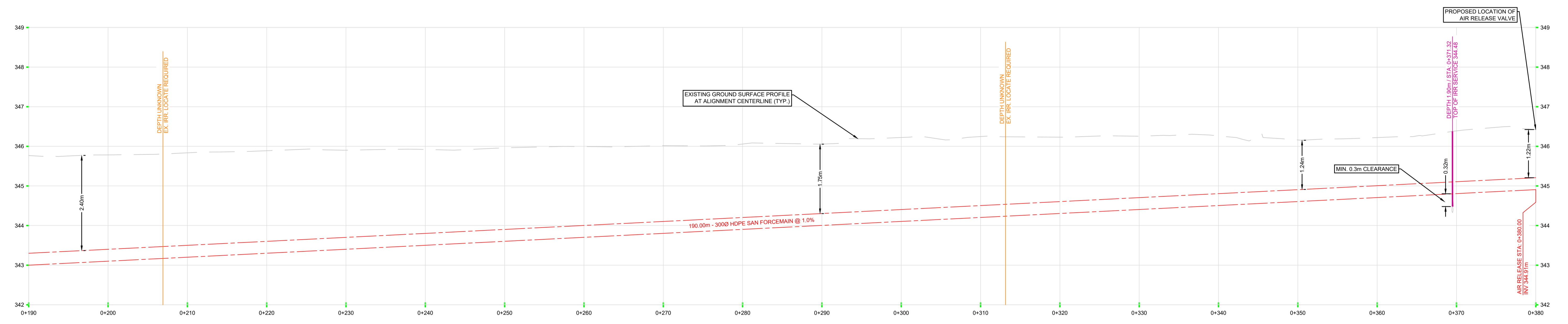
Z:\Projects\173\29 - Cummins Foremain Replacement\1 - Civil Engineering\Drawings\1 - Design\173-29 - Cummins Foremain - Design - CoV Option.dwg

23.10.2024

- ⊗ - FIELD VERIFY LOCATION REQUIRED
- ⊗ - FIELD VERIFIED BY CITY OF VERNON
- ⊗ - FPA BOREHOLE
- ⊗ - FIELD VERIFIED BY INVERT INTERPOLATION



SAN CL



REV. No.	DATE	DESIGNED	DRAWN	CHECKED	DESCRIPTION
A	2024/08/20	BTL	LJW	BTL	PROPOSED FORCEMAIN ALIGNMENT
B	2024/08/29	BTL	LJW	BTL	PROPOSED FORCEMAIN ALIGNMENT & LOCATE PLAN
C	2024/09/24	BTL	JKW	BTL	ISSUED FOR 60% DESIGN
D	2024/10/23	BTL	LJW	BTL	ISSUED FOR TENDER

PERMIT NO: 202679
DRAFT
 (ISSUED FOR REVIEW)

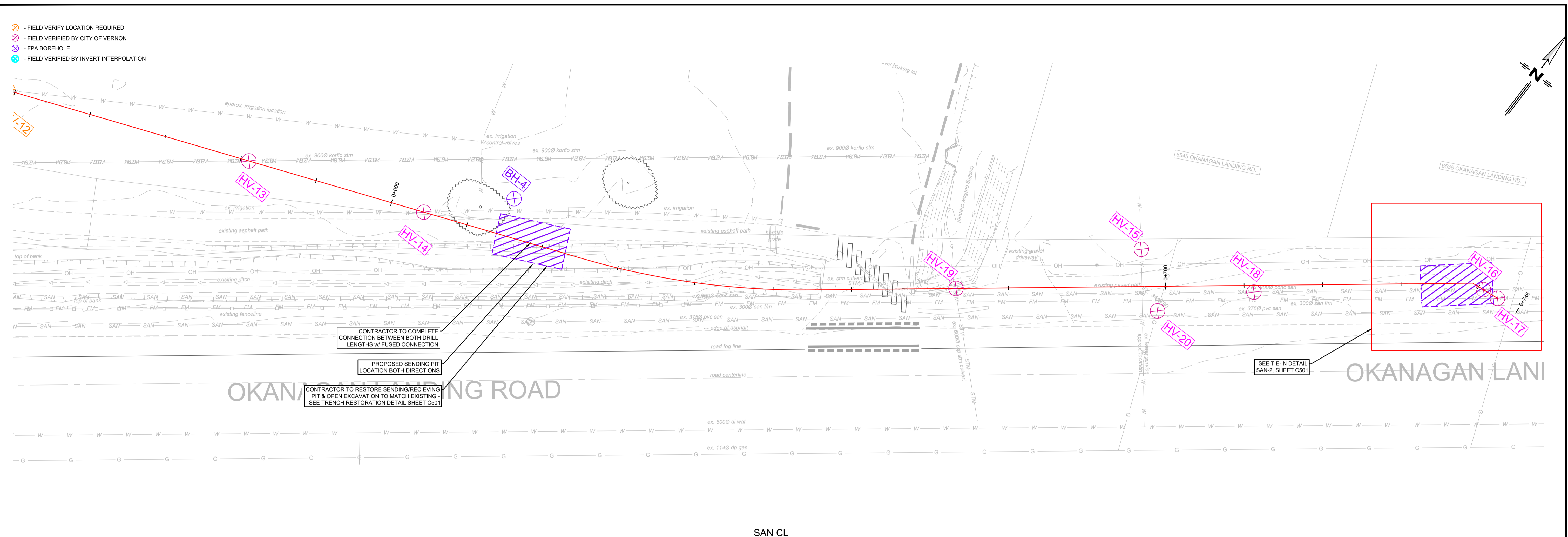


SCALE
 H:1:250
 V:N/A
 SHEET
 4 OF 9

TITLE
CUMMINS FORCEMAIN REPLACEMENT
 PROPOSED FORCEMAIN PLAN/PROFILE
 STA: 0+190 - 0+380
 DRAWING NUMBER
C202

Z:\Projects\173\29 - Cummins Foremain Replacement\1 - Civil Engineering\Drawings\1 - Design\173-29 - Cummins Foremain - Design - CoV Option.dwg

23.10.2024



REV. No.	DATE	DESIGNED	DRAWN	CHECKED	DESCRIPTION

PERMIT NO. 202479

DRAFT
(ISSUED FOR REVIEW)



SCALE
H:1:250
V:N/A

SHEET
6 OF 9

TITLE
CUMMINS FORCEMAIN REPLACEMENT
PROPOSED FORCEMAIN PLAN/PROFILE
STA: 0+560 - 0+746

DRAWING NUMBER
C204